

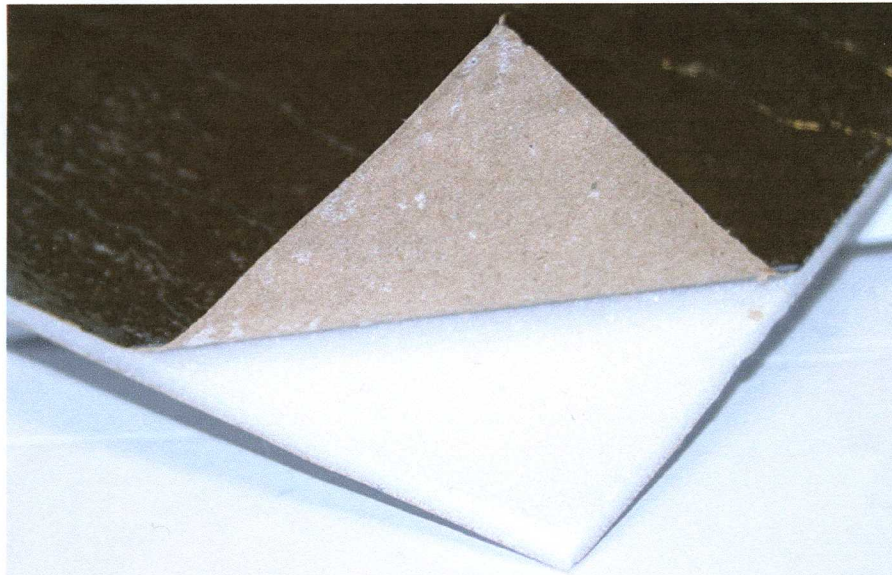


TEI-Testing Services-Mechanical Laboratory
3455 South 500 West
Salt Lake City, UT 84123-4234 USA
TEL: (801) 262-2448 FAX: (801) 262-9870

Pictures of Report of Test M00137
i.e. Innovative Energy, Inc.
Page 1 of 2
Report Date: 15 November 2005



Ultra-Duct Assembled

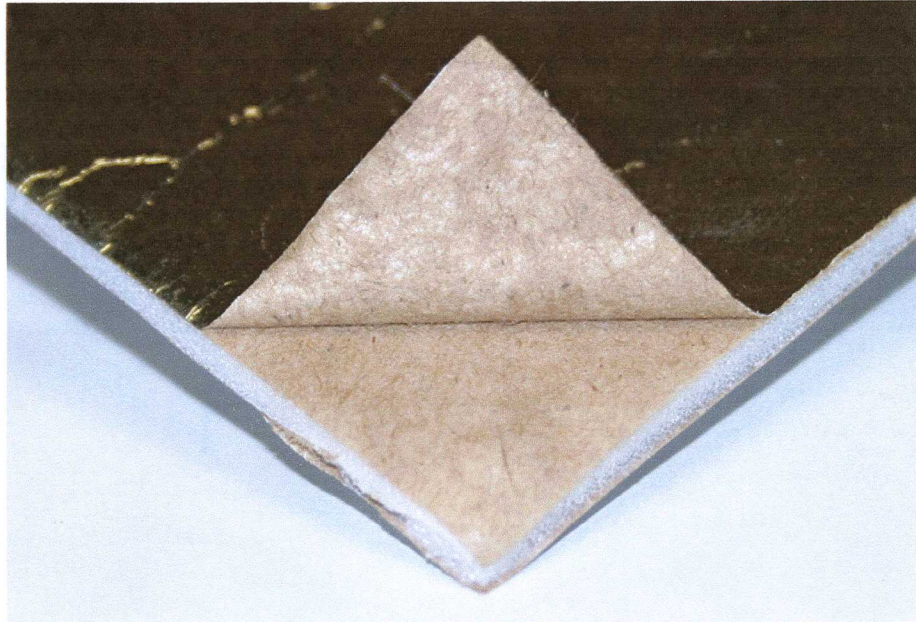


Detail of Foil on Kraft Paper showing Polystyrene Core

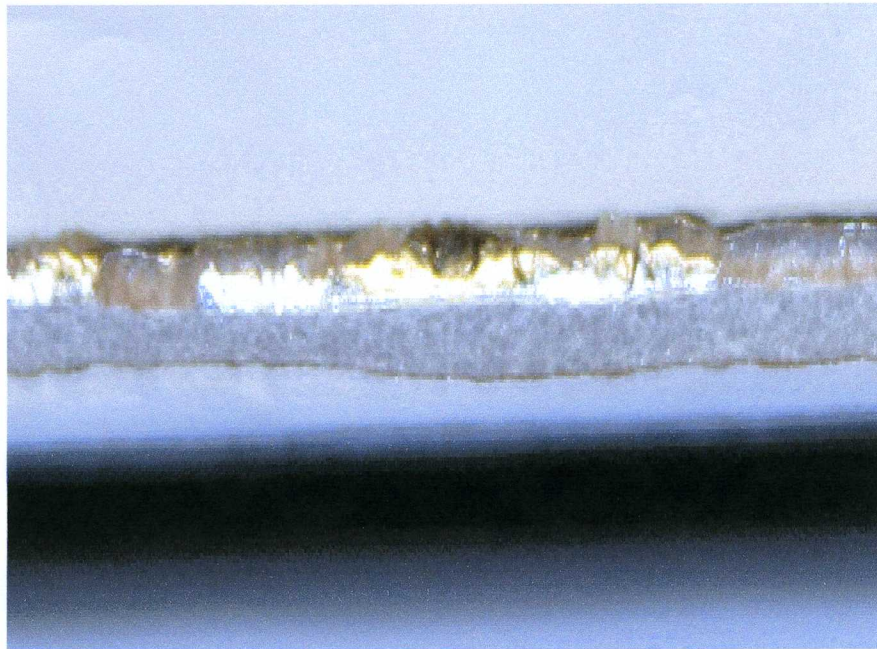


TEi-Testing Services-Mechanical Laboratory
3455 South 500 West
Salt Lake City, UT 84123-4234 USA
TEL: (801) 262-2448 FAX: (801) 262-9870

Pictures of Report of Test M00137
i.e. Innovative Energy, Inc.
Page 2 of 2
Report Date: 15 November 2005



Detail of Foil on Kraft Paper



Cross Section (Foil, Kraft Paper, Polystyrene Core, Kraft Paper, Foil)